

BNZ-BUSINESS NZ PSI

BNZ-Business NZ PSI is a monthly survey of the services sector providing an early indicator of activity levels. A PSI reading above 50 points indicates services activity is expanding; below 50 indicates it is contracting.

psi

Service sector conditions pick up in February

BNZ - Business NZ PSI for February 2010

- The BNZ - Business NZ Performance of Service Index (PSI) for February stood at 53.7, up 0.6 points from January and the first improvement from the previous month since November 2009. The February 2010 result was also well above the result for the same month in 2009 (46.3).
- Three of the five sub-indices were in expansion mode, with only *stocks/inventories* (49.2) showing slight contraction after three consecutive months of slight expansion. *New orders* (58.9) continued to lead the way with another strong result, while *activity/sales* (55.6) also picked up from January to record a value similar to December. *Employment* (50.6) fell 2.1 points from January, but still remained in expansion for the fifth consecutive month. *Supplier deliveries* (50.0) slipped 0.3 points from the previous month to remain unchanged for February.
- Activity was positive for three of the four main regions during February, with the *Otago/Southland* region (55.7) just ahead of the *Northern* region (54.7). The *Central* region (51.1) again fell back for the second consecutive month, while the *Canterbury/Westland* region (46.8) experienced its first contraction since June 2009. This was mainly due to a fall off in all sub-indices except new orders/business, which remained strong in that region.
- Results for the various service sectors were a mixture of expansion and decline during February. *Health & community services* (58.8) led the way for February, followed by *wholesale trade* (54.2). *Accommodation, cafes & restaurants* (52.6) picked up from January, while *property & business services* (52.4) experienced expansion after two months of decline. *Retail trade* (47.6) went into contraction during February, as did *transport & storage* (47.8).
- All firms by employment size showed expansion during February, with micro sized firms (1-10 workers) (52.3) recovering from its contraction in January. Both small-medium sized firms (11-50 workers) (53.2) and medium-large sized firms (51-100) (59.0) fell from the previous month, while large sized firms (101+ workers) (54.6) changed little from January.
- The improvement in the level of expansion during February meant the proportion of positive comments from respondents increased to 57.0%, compared with 51.5% in January, 56.0% in December, 54.5% in November, and 49.8% in October.

The BNZ - Business NZ Performance of Services Index is a monthly survey of the services sector providing an early indicator of activity levels. A PSI reading above 50 points indicates services activity is expanding; below 50 indicates it is contracting.

HIGHLIGHTS

- **Service sector activity improves, with results similar over last three months.**
- **Most sub-indices remain in expansion, with new orders/business still strong.**
- **Regional activity expansionary across most parts of the country.**

**Next BNZ - Business NZ PSI:
19 April 2010**

SPONSOR STATEMENT

BNZ is delighted to be associated with the Performance of Services Index (PSI) and Business NZ. This association brings together the significant experience of leading business advocacy body Business NZ, and business finance specialist BNZ. We look forward to continuing our association with Business NZ and associated regional organisations, and to playing our part in the ongoing development of the New Zealand services sector.

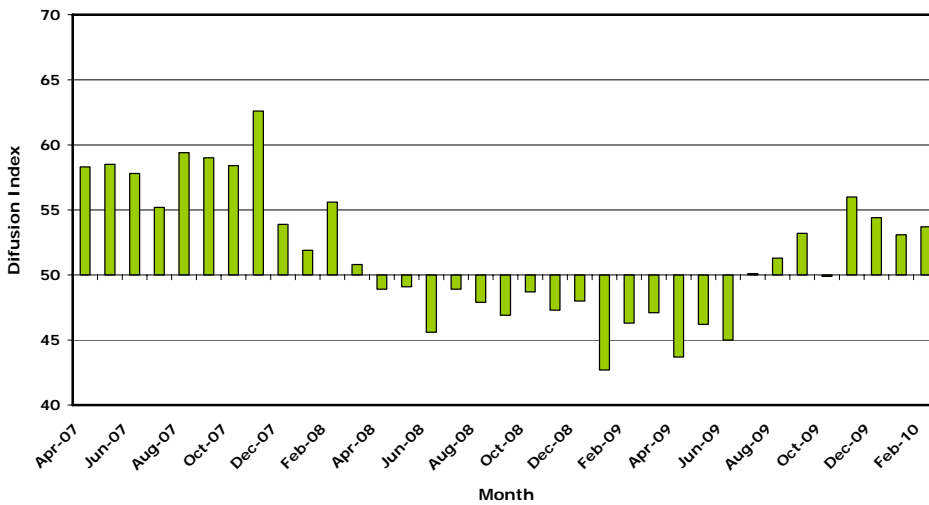
BNZ (www.research.bnz.co.nz)

BNZ-BUSINESS NZ PSI

BNZ-Business NZ PSI is a monthly survey of the services sector providing an early indicator of activity levels. A PSI reading above 50 points indicates services activity is expanding; below 50 indicates it is contracting.

psi

**BNZ - Business NZ Performance of Services Index Time Series
(April 2007 - February 2010)**



PSI time series tables

National Indexes	Feb 2008	Feb 2009	Nov 2009	Dec 2009	Jan 2010	Feb 2010
BNZ - Business NZ PSI	55.6	46.3	56.0	54.4	53.1	53.7
Activity/Sales	56.2	42.9	58.7	55.1	53.6	55.6
Employment	52.1	44.9	51.2	51.1	52.7	50.6
New Orders/Business	61.4	49.8	61.1	60.0	56.1	58.9
Stocks/Inventories	51.3	48.3	50.6	50.3	50.3	49.2
Supplier Deliveries	53.5	47.2	54.3	52.0	50.3	50.0

Regional Indexes	Feb 2008	Feb 2009	Nov 2009	Dec 2009	Jan 2010	Feb 2010
BNZ - Business NZ PSI	55.6	46.3	56.0	54.4	53.1	53.7
Northern	52.8	45.3	54.8	52.5	52.4	54.7
Central	55.6	46.9	59.3	60.9	54.3	51.1
Canterbury/Westland	60.2	48.9	56.0	56.1	51.7	46.8
Otago/Southland	61.1	48.0	59.4	54.4	59.0	55.7

PARTICIPANTS

Business NZ gratefully acknowledges the participation of the following associations in contributing to the PSI:

- Employers & Manufacturers Association (Northern)
- Employers & Manufacturers Association (Central)
- Canterbury Employers' Chamber of Commerce
- Otago Southland Employers Association
- Hospitality Association of New Zealand
- New Zealand Retailers Association
- Tourism Industry Association New Zealand

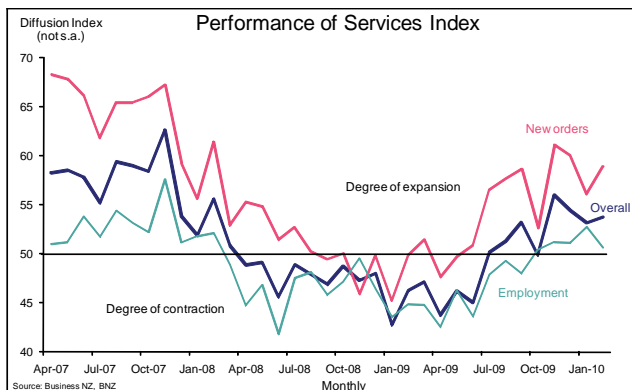
15 March 2010

Service Sector Activity Increasing

- Service sector recovery continues
- Encouraging for wider economy
- Expansion not yet fast enough for strong jobs growth

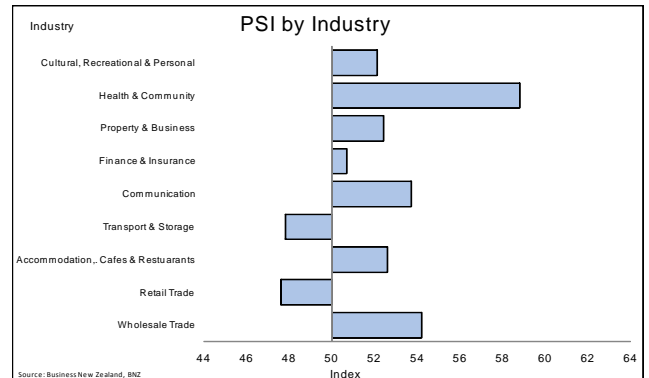
The service sector as a whole continued to push forward in February, extending the recovery that started around July last year. This is the general conclusion from February's Performance of Services Index, as it ticked up to 53.7 from 53.1 in January. Being above 50, it represents expansion within the sector and is a solid step up from the 46.3 recorded last February.

The new orders index continues to lead the way at a healthy 58.9, up 1.8 from January. This is encouraging for the durability of service sector expansion over coming months and for the wider recovery, given the sector makes up around two thirds of the economy.



Expansion was not uniform across all industries within the service sector. Health and community services stood out on the positive side, while retail trade and transport were the underperformers dipping below the 50 level in February from January.

The weakness in retail trade follows solid months in December and January and may simply reflect a pullback for the Christmas and New Year sales period. And with only a one month dip it is hardly a trend. But, it does tie in with weaker looking indicators for retail sales published elsewhere. Official retail sales for January published last Friday were soft at heart, with core sales only eking out a 0.3% rise following a 2.0% drop in December (and these figures remove the usual seasonal movements). Indicators for February tell a similar story. The value of electronic card transactions at retail stores fell 0.4% more than usual in February.



We are starting to wonder if some of the weakness reflects households materially increasing their savings rate (at long last). We say this with signs that employment indicators are improving and consumer confidence has strengthened to a relatively strong level. This is not usually the backdrop to falling spending.

The idea that saving is increasing certainly fits with anecdote that many households have not dropped their mortgage repayments as much as the big fall in mortgage rates has afforded, implying increased paying down of debt. While a pain for shopkeepers, this is fundamentally a good thing in respect of desired de-leveraging.

The other thing we (continue to) wonder about is how much of the disappointing trend in nominal spending reflects aggressive discounting by retailers as opposed to poor volume per se.

This, by the way, is a gentle reminder that the retail sector is probably not the place to look for the leading edge of New Zealand's GDP recovery. That mantle seems to be migrating to the likes of manufacturing, the broader services sector, and even some parts of the construction sector.

As for today's survey, while the main indicators are in positive territory, there is a hint of a plateau developing over recent months. Certainly, across all the sub indices the movements between January and February were all well within the usual monthly volatility. But even back to November, movements have been within relatively tight ranges. So, while service sector activity continues to expand, the acceleration we saw through the mid-to-latter part of 2009 may be tapering off. This would tie in with our view that the economy as a whole likely accelerated in Q4 2009 and maintained, rather than add to, this momentum into the New Year.

On a similar theme, we note that between January and February this year, the overall index, and across all major components, has not lifted as much as over the same months in the previous two years. The three point difference is not huge, but another pointer that the expansion, while ongoing, has not gathered pace early in the New Year.

A lack of acceleration would be important given the current rate of expansion seems enough for only mild net job creation - judging by the employment index just keeping its nose above the 50 line in February. Moreover, the implied labour demand will struggle to keep up with ongoing labour supply, the corollary being an unemployment rate that is likely to stay elevated for a while yet.

The ongoing slack in the labour market means no immediate need to lift interest rates from record lows. This was the clear message and (non) action from the Reserve Bank in its latest Monetary Policy Statement released last Thursday. Indeed, embedded in the Bank's forecast was an expectation of activity accelerating and with this interest rates may start to rise from around the middle of 2010.

All this, of course, is not set in stone and given where the economy has been over the past couple of years we must walk before we run.

doug_steel@bnz.co.nz

Contact Details

BNZ

Stephen Toplis
Head of Research
+(64 4) 474 6905

Craig Ebert
Senior Economist
+(64 4) 474 6799

Doug Steel
Economist
+(64 4) 474 6923

Danica Hampton
Senior Strategist
+(64 4) 472 4767

Mike Jones
Strategist
+(64 4) 472 4767

Main Offices

Wellington
60 Waterloo Quay
Private Bag 39 806
Wellington Mail Centre
Lower Hutt 5045
New Zealand
Phone: +(64 4) 474 6145
FI: 0800 283 269
Fax: +(64 4) 474 6266

Auckland
80 Queen Street
Private Bag 92 208
Auckland 1142
New Zealand
Phone: +(64 9) 976 5762
Toll Free: 0800 081 167

Christchurch
129 Hereford Street
PO Box 1461
Christchurch 8140
New Zealand
Phone: +(64 3) 353 2219
Toll Free: 0800 854 854

National Australia Bank

Peter Jolly
Head of Research
+(61 2) 9237 1406

Alan Oster
Group Chief Economist
+(61 3) 8634 2927

Rob Henderson
Chief Economist, Markets
+(61 2) 9237 1836

John Kyriakopoulos
Currency Strategist
+(61 2) 9237 1903

Wellington
Foreign Exchange
Fixed Income/Derivatives

+800 642 222
+800 283 269

Sydney
Foreign Exchange
Fixed Income/Derivatives

+800 9295 1100
+(61 2) 9295 1166

London
Foreign Exchange
Fixed Income/Derivatives

+800 333 00 333
+(44 20) 7796 4761

New York
Foreign Exchange
Fixed Income/Derivatives

+1 800 125 602
+1877 377 5480

Hong Kong
Foreign Exchange
Fixed Income/Derivatives

+(85 2) 2526 5891
+(85 2) 2526 5891

24 HOUR FOREIGN EXCHANGE SERVICE

Phone Toll Free 6am to 10pm NZT – Wellington Office

0800 739 707 10pm to 6am NZT – London Office – Sam Hehir

ANALYST DISCLAIMER: The person or persons named as the author(s) of this report hereby certify that the views expressed in the research report accurately reflect their personal views about the subject securities and issuers and other subject matters discussed. No part of their compensation was, is, or will be, directly or indirectly, related to the specific recommendations or views expressed in the research report. Research analysts responsible for this report receive compensation based upon, among other factors, the overall profitability of the Markets Division of National Australia Bank Limited, a member of the National Australia Bank Group ("NAB"). The views of the author(s) do not necessarily reflect the views of NAB and are subject to change without notice. NAB may receive fees for banking services provided to an issuer of securities mentioned in this report. NAB, its affiliates and their respective officers, and employees, including persons involved in the preparation or issuance of this report (subject to the policies of NAB), may also from time to time maintain a long or short position in, or purchase or sell a position in, hold or act as advisors, brokers or commercial bankers in relation to the securities (or related securities and financial instruments), of companies mentioned in this report. NAB or its affiliates may engage in these transactions in a manner that is inconsistent with or contrary to any recommendations made in this report.

NEW ZEALAND DISCLAIMER: This publication has been provided for general information only. Although every effort has been made to ensure this publication is accurate the contents should not be relied upon or used as a basis for entering into any products described in this publication. Bank of New Zealand strongly recommends readers seek independent legal/financial advice prior to acting in relation to any of the matters discussed in this publication. Neither Bank of New Zealand nor any person involved in this publication accepts any liability for any loss or damage whatsoever may directly or indirectly result from any advice, opinion, information, representation or omission, whether negligent or otherwise, contained in this publication.

US DISCLAIMER: This information has been prepared by National Australia Bank Limited or one of its affiliates or subsidiaries ("NAB"). If it is distributed in the United States, such distribution is by nabSecurities, LLC which accepts responsibility for its contents. Any U.S. person receiving this information wishes further information or desires to effect transactions in the securities described herein should call or write to nabSecurities, LLC, 28th Floor, 245 Park Avenue, New York, NY 10167 (or call (877) 377-5480). The information contained herein has been obtained from, and any opinions herein are based upon, sources believed to be reliable and no guarantees, representations or warranties are made as to its accuracy, completeness or suitability for any purpose. Any opinions or estimates expressed in this information is our current opinion as of the date of this report and is subject to change without notice. The principals of nabSecurities, LLC or NAB may have a long or short position or may transact in the securities referred to herein or hold or transact derivative instruments, including options, warrants or rights with securities, or may act as a market maker in the securities discussed herein and may sell such securities to or buy from customers on a principal basis. This material is not intended as an offer or solicitation for the purchase or sale of the securities described herein or for any other action. It is intended for the information of clients only and is not for publication in the press or elsewhere.

National Australia Bank Limited is not a registered bank in New Zealand.